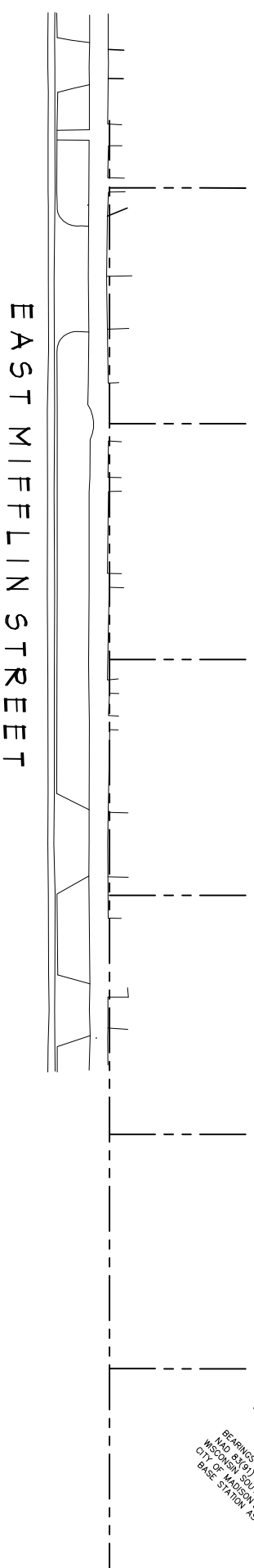
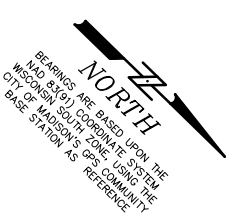
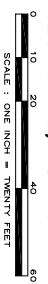


STEP MAP

PART OF LOT 3, AND ALL OF LOTS 4 AND 5, ORIGINAL PLAT OF MADISON, AS RECORDED IN VOLUME A OF PLATS, ON PAGE 3, AS DOCUMENT NUMBER 102, DANE COUNTY REGISTRY, ALSO LOCATED IN THE SOUTHWEST QUARTER (¼) OF SECTION 13, TOWNSHIP 07 NORTH, RANGE 09 EAST, CITY OF MADISON, DANE COUNTY, WISCONSIN



- SHEET INDEX
- C-11 SITE PLAN
 - A-11 BASEMENT PLAN
 - A-12 FIRST FLOOR PLAN
 - A-13 SECOND FLOOR PLAN
 - A-14 THIRD FLOOR PLAN
 - A-15 FOURTH FLOOR PLAN
 - A-16 FIFTH FLOOR PLAN
 - A-21 ELEVATIONS
 - A-22 ELEVATION

Notes

7601 University Avenue Suite 201
Middleton, Wisconsin 53562
608-836-3690 Fax 836-6934

KNOTHE & BRUCE
ARCHITECTS

Consultant

Revisions
 ISSUED - DEC. 13, 2005
 Neighborhood Meeting - March 01, 2006
 Issued - April 3, 2006
 Initial UDC Submittal - April 26, 2006

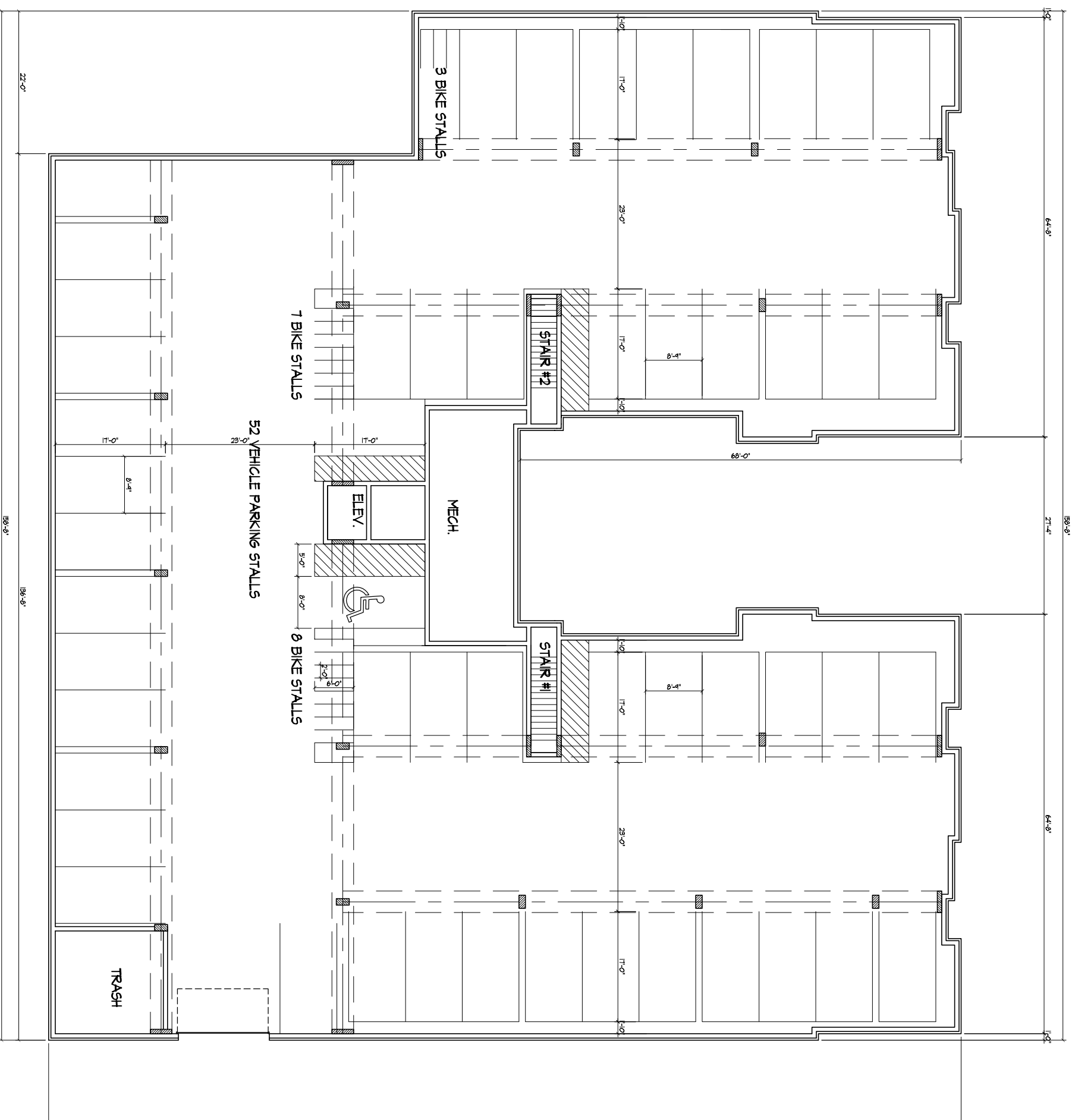
Project Title
The Colony

625 E. Mifflin Street

Drawing Title
Site Plan

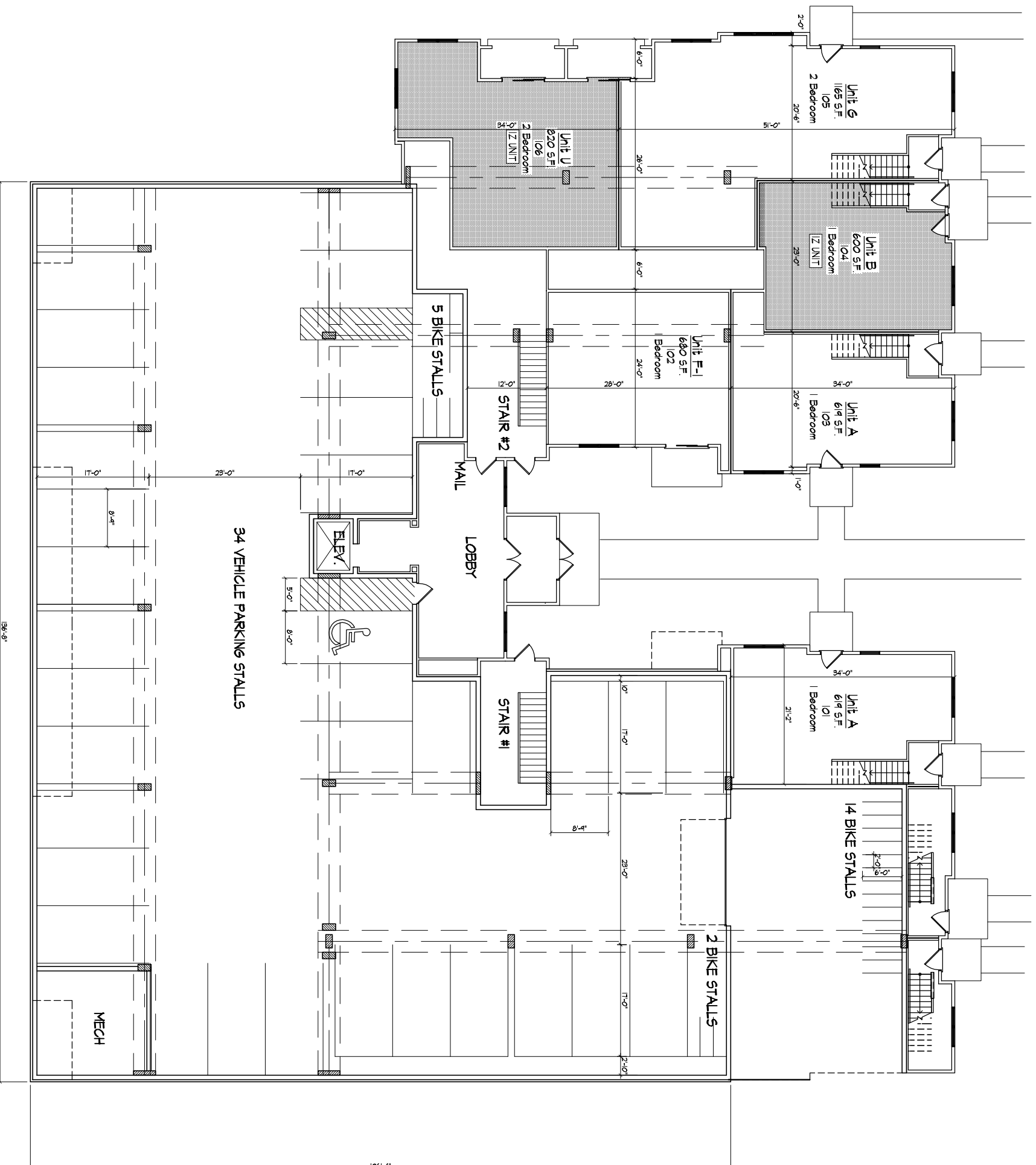
Project No. **0548** Drawing No. **C-11**

FS14
 SHEET 1 OF 1



BASEMENT PLAN
1/8" = 1'-0"





FIRST FLOOR PLAN

1/8" = 1'-0"

AREAS:

FINISHED	6826 S.F.
UNFINISHED	10724 S.F.
TOTAL	17550 S.F.



Consultant

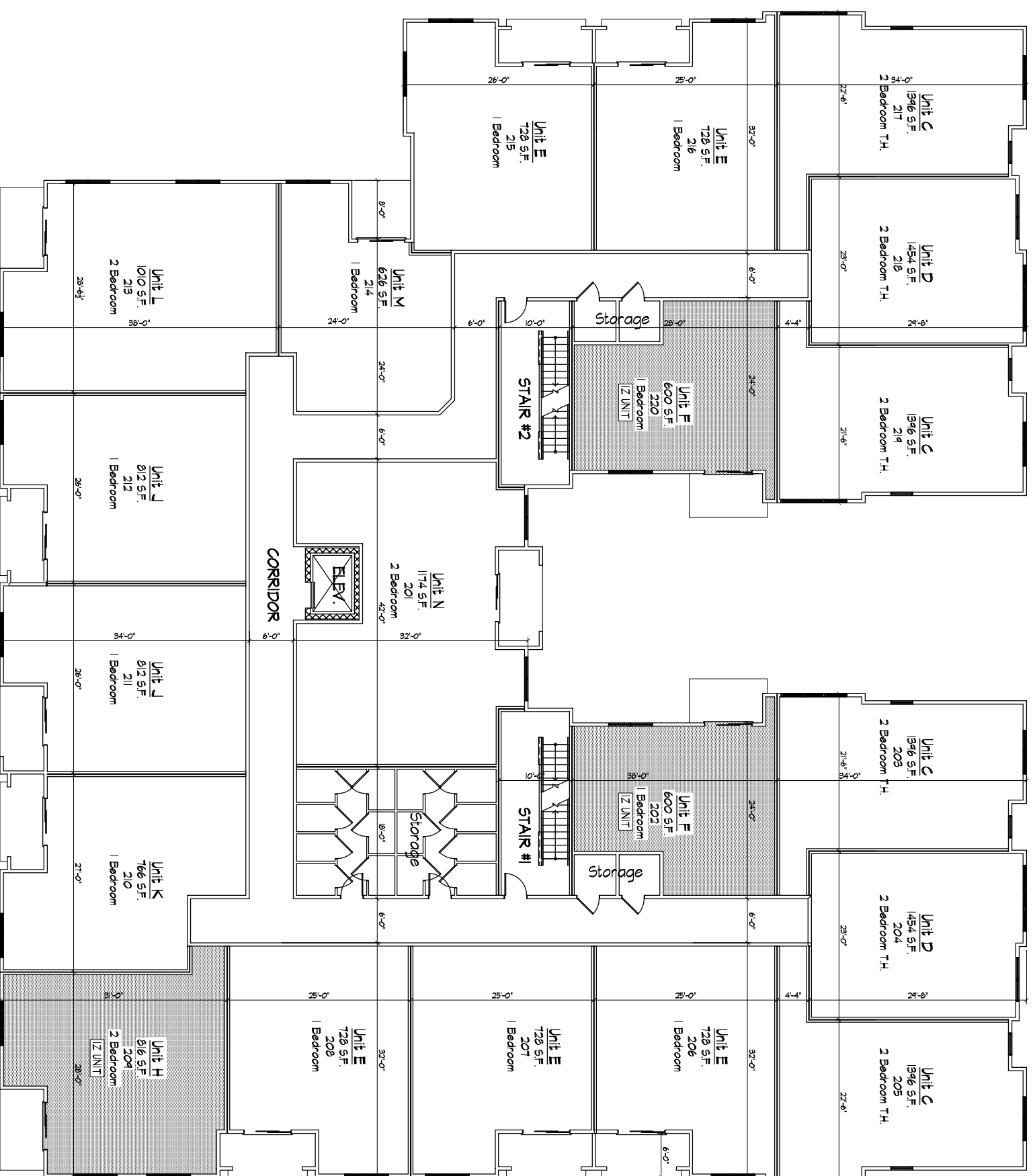
Notes

Revisions
Plan Commission Submittal - April 12, 2006

Project Title
The Colony

625 E. Mifflin Street
Drawing Title
Second Floor Plan

Project No. **0548** Drawing No. **A-1.3**

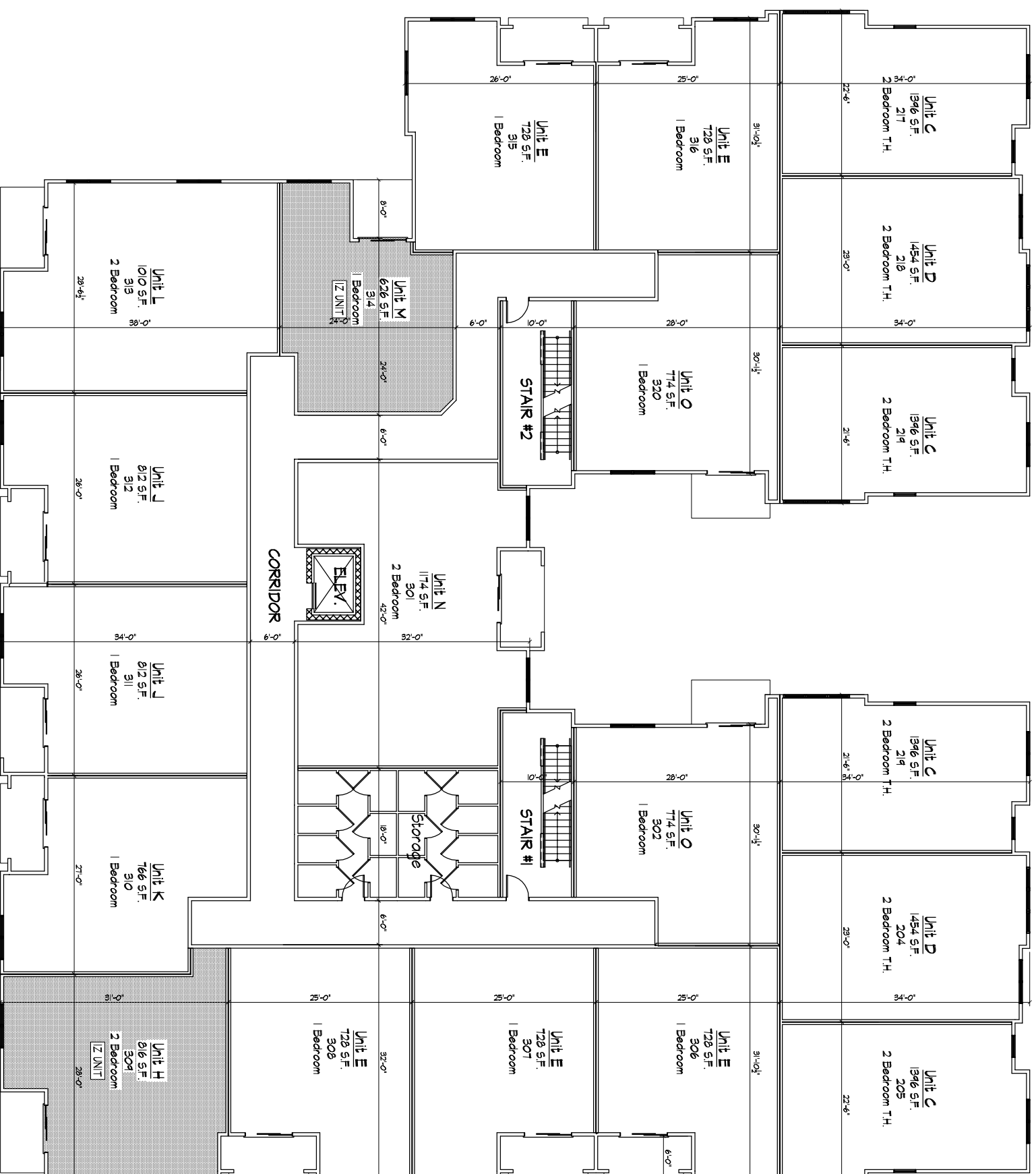


1/8" = 1'-0" **SECOND FLOOR PLAN** TOTAL AREA 17,904 S.F.



Consultant

Notes



Revisions
Plan Commission Submittal - April 12, 2006

Project Title
The Colony

625 E. Mifflin Street
Drawing Title
Third Floor Plan

Project No. **0548** Drawing No. **A-1.4**

THIRD FLOOR PLAN TOTAL AREA 17904 S.F.



1/8" = 1'-0"

Consultant

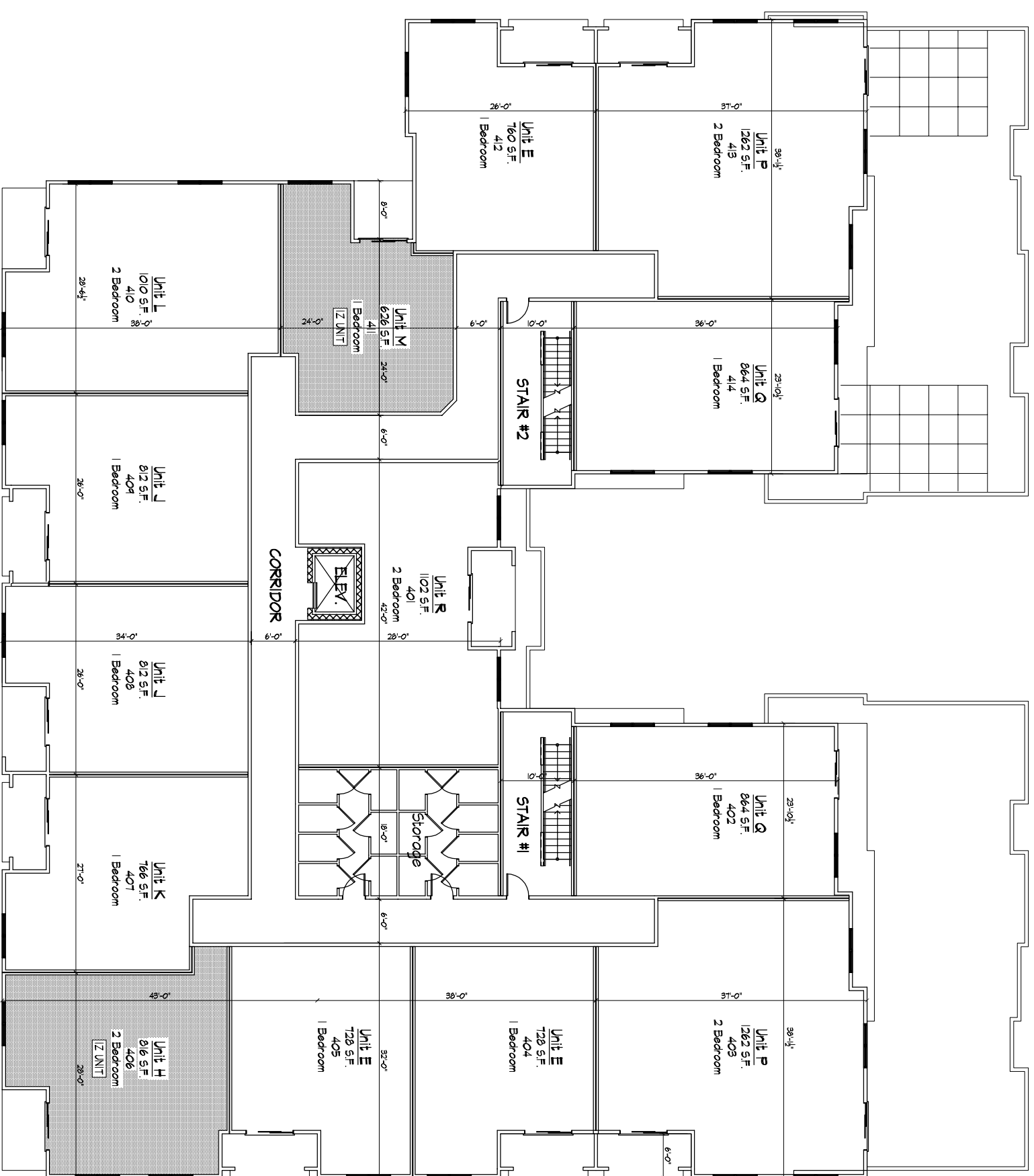
Notes

Revisions
Plan Commission Submittal - April 12, 2006

Project Title
The Colony

625 E. Mifflin Street
Drawing Title
Fourth Floor Plan

Project No. **0548** Drawing No. **A-1.5**

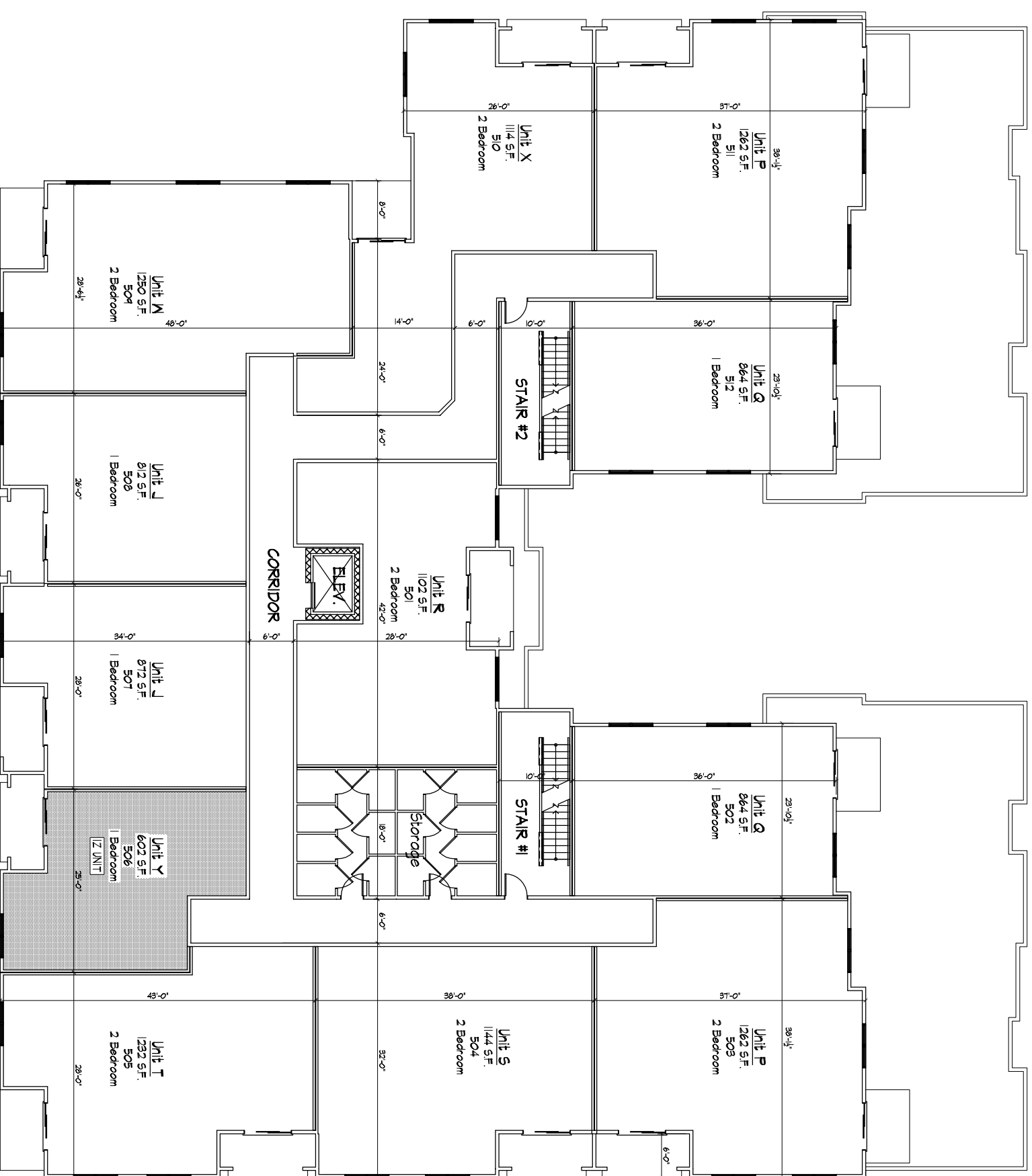


FOURTH FLOOR PLAN TOTAL AREA 14,742 S.F.



Consultant

Notes



Revisions
Plan Commission Submittal - April 12, 2006

Project Title
The Colony

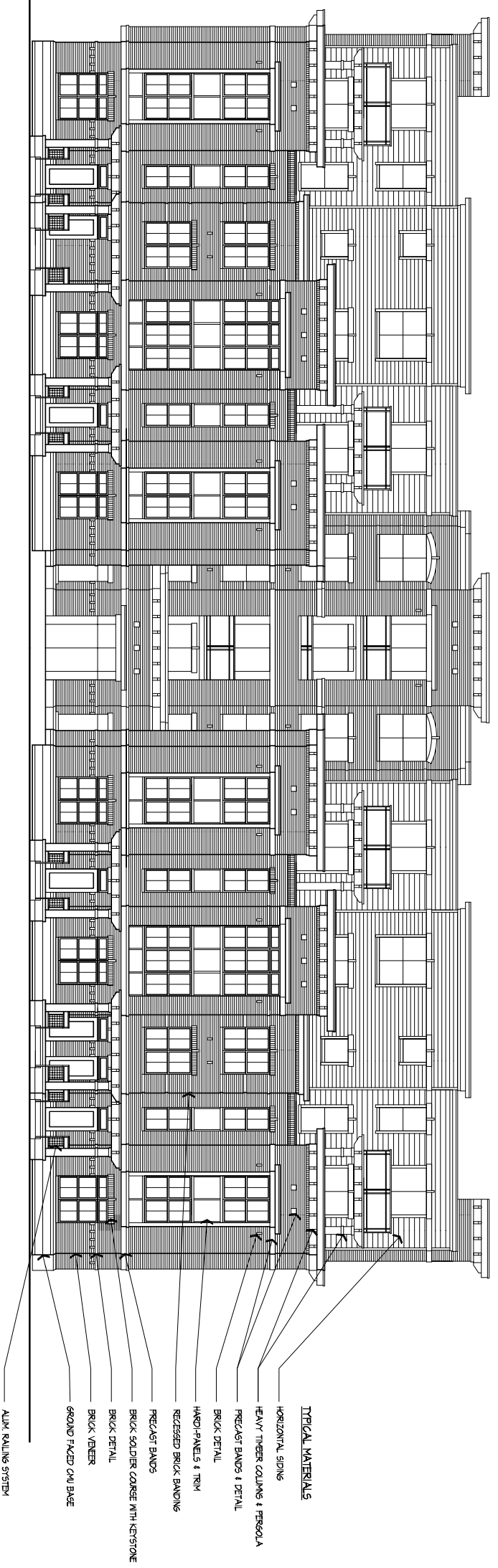
625 E. Mifflin Street
Drawing Title
Fifth Floor Plan

Project No. **0548** Drawing No. **A-16**

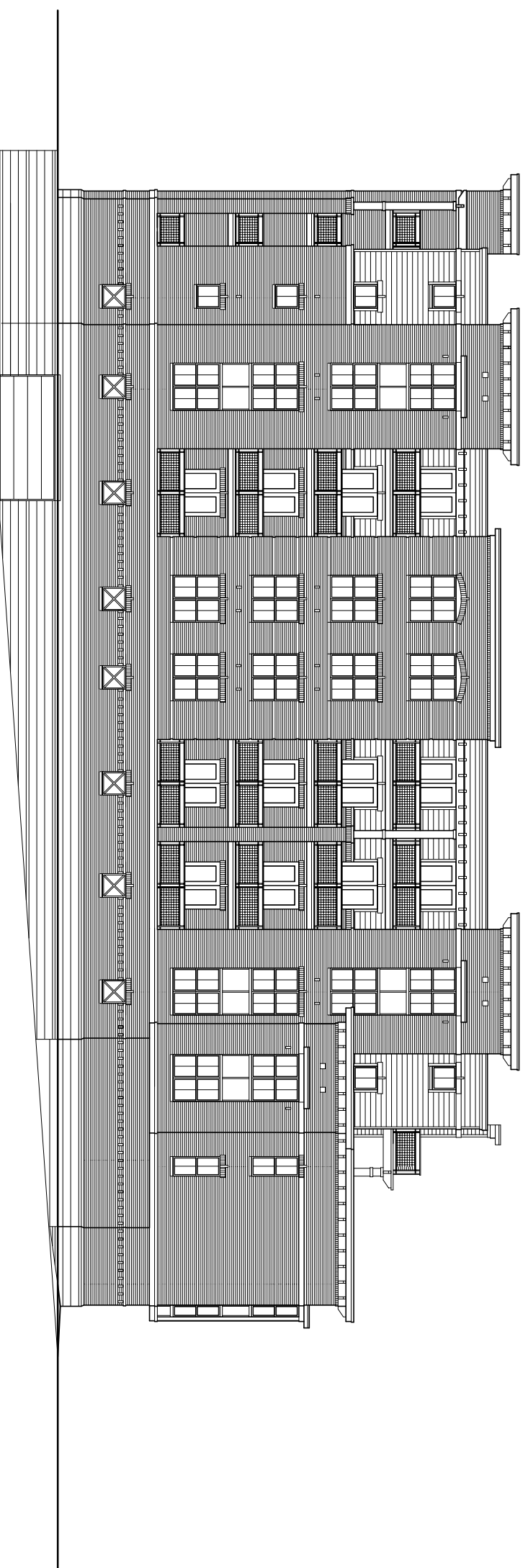
FIFTH FLOOR PLAN TOTAL AREA 14,742 S.F.



1/8" = 1'-0"



○ FRONT ELEVATION ALONG E. MIFFLIN STREET
1/8" = 1'-0"



Revisions
Plan Commission Submittal - April 12, 2006
Final UPC Submittal - May 17, 2006

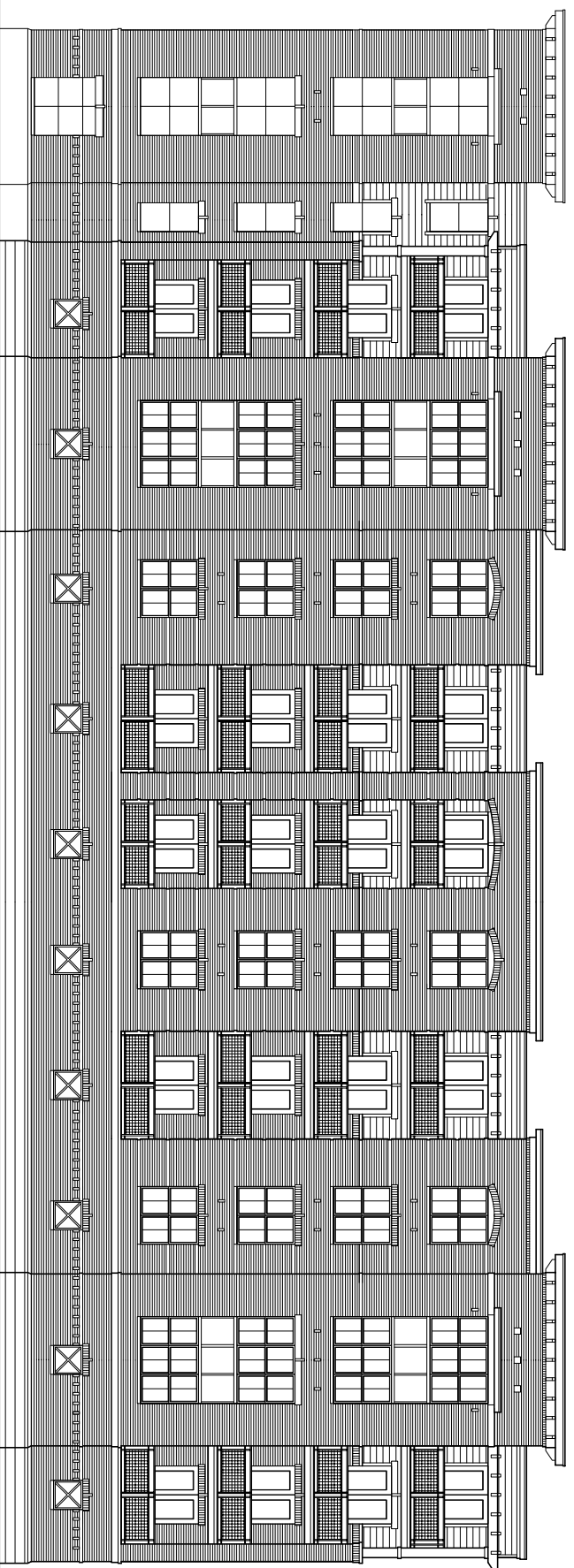
Project Title
The Colony

625 E. Mifflin Street
Drawing Title
Elevations

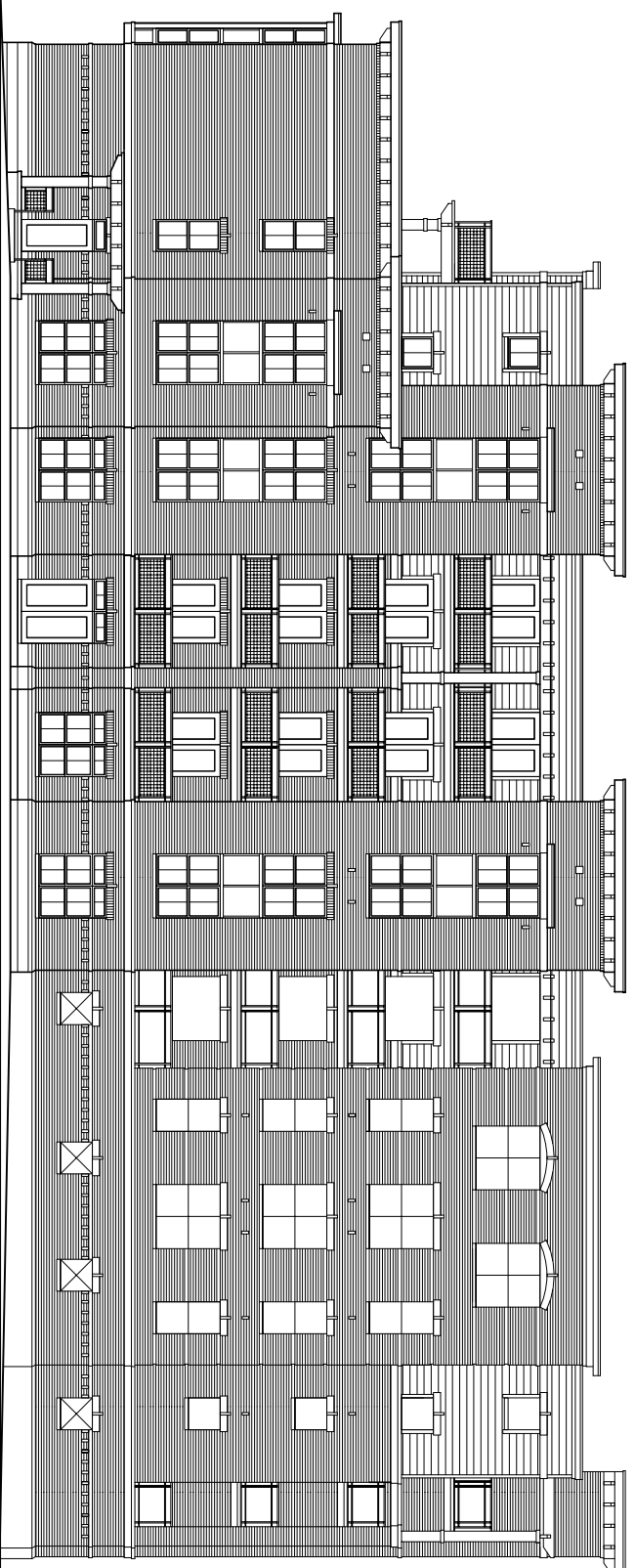
Project No. **0548**
Drawing No. **A-2.1**

Consultant

Notes



REAR ELEVATION
1/8" = 1'-0"



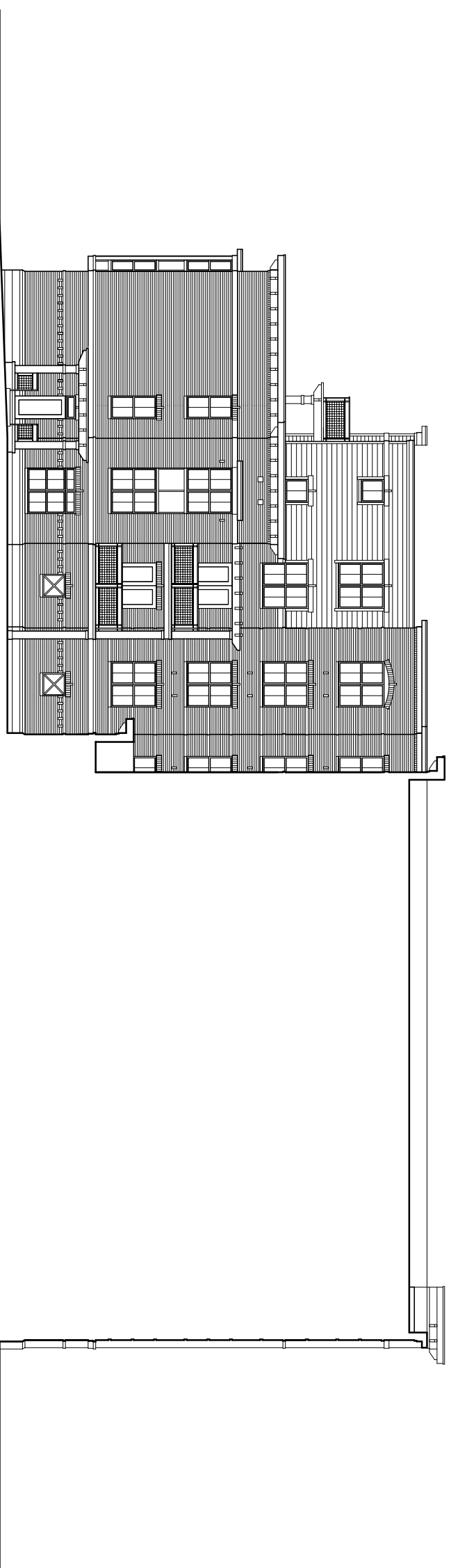
SOUTHWEST SIDE ELEVATION
1/8" = 1'-0"

Revisions
Plan Commission Submittal - April 12, 2006
Final UPC Submittal - May 17, 2006

Project Title
The Colony

625 E. Mifflin Street
Drawing Title
Elevations

Project No. **0548** Drawing No. **A-2.2**



 COURTYARD ELEVATION

1/8" = 1'-0"

Revisions
Plan Commission Submittal - April 12, 2006
Final UDC Submittal - May 17, 2006

Project Title
The Colony

625 E. Mifflin Street
Drawing Title
Elevation

Project No. 0548 Drawing No. A-23